

About "Sure Cuts A Lot"

Thank you for choosing "Sure Cuts A Lot". "Sure Cuts A Lot" is an extremely easy program to cut your True Type fonts and various shapes using your Cricut™ Machine. With the combination of using your Fonts and importing custom artwork (SVG), the possibilities are endless!

* "Cricut" is a registered trademark of Provo Craft & Novelty Inc. Craft Edge and "Sure Cuts A Lot" are not affiliated with Provo Craft & Novelty Inc.

Features

- Works with your installed True Type fonts on your computer
- Works with Cricut Personal and Cricut Expression machines™
- Works with thousands of free True Type fonts
- Works with hundreds of free True Type Dingbat fonts
- Import SVG files to allow you to use your own custom artwork
- Weld overlapping letters and shapes together
- Select styles, including Shadow and Blackout, to change the look of your letters and shapes
- No special cartridges required
- Cut additional shapes from the "Sure Cuts A Lot" Library
- WYSIWYG Interface - What you see is what you cut
- Available for Windows and Macintosh OSX
- Save your design layouts, so you can save your work to allow you to make changes over time

System Requirements

Macintosh

- Power PC or Intel based Macintosh or greater
- Macintosh OS 10.4/10.5
- 512 MB of RAM
- 50 MB of available hard disk space
- USB Port 1.1 or 2.x
- Cricut™ Personal - Firmware v1.1 ([How to check/update your firmware version](#))
- Cricut™ Expression - Firmware v2.1 ([How to check/update your firmware version](#))

Windows

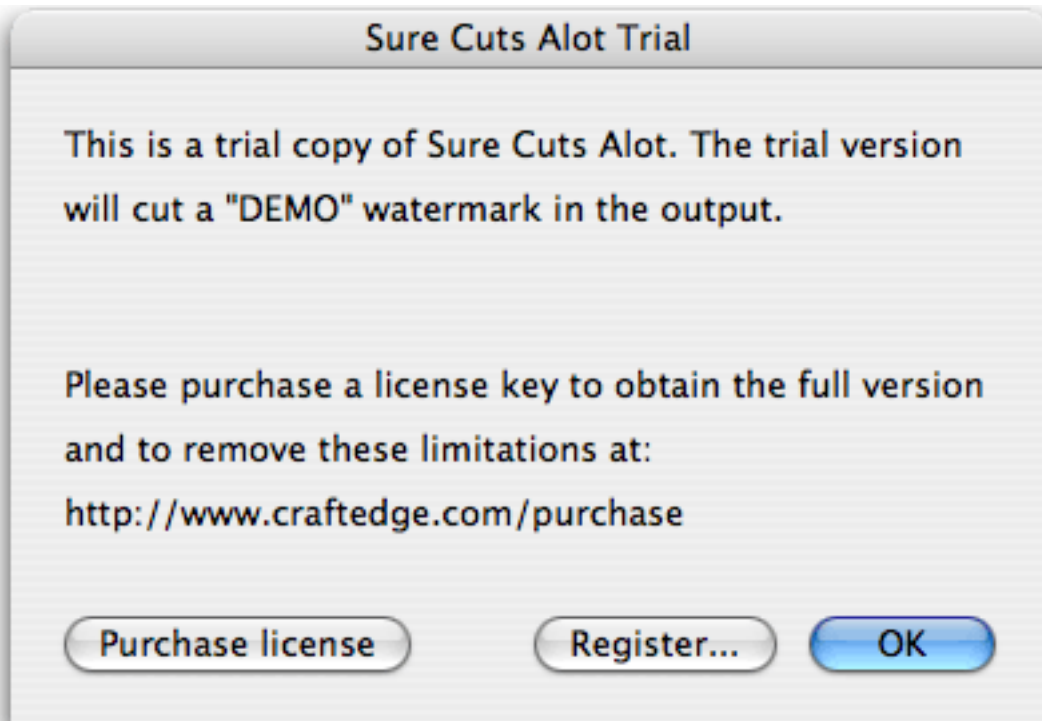
- Pentium processor-based PC or compatible computer
- Windows 2000/XP/Vista

- 512 MB of RAM
- 50 MB of available hard disk space
- USB Port 1.1 or 2.x
- Cricut™ Personal - Firmware v1.1 ([How to check/update your firmware version](#))
- Cricut™ Expression - Firmware v2.1 ([How to check/update your firmware version](#))
- USB Serial Converter Driver ([How to download/install USB Driver](#))

Download and Install

The latest version of "Sure Cuts A Lot" can be downloaded at <http://www.craftededge.com/download>. After downloading and installing the software, it will run in Trial Mode.

When you launch "Sure Cuts A Lot", you will be presented with a window to Activate or Purchase the full version, or continue to use as the Trial version.



The Trial Version will run exactly as the Full Licensed Version, except that when it cuts with the Cricut™ machine, it will add a DEMO watermark by cutting horizontal lines through your design.

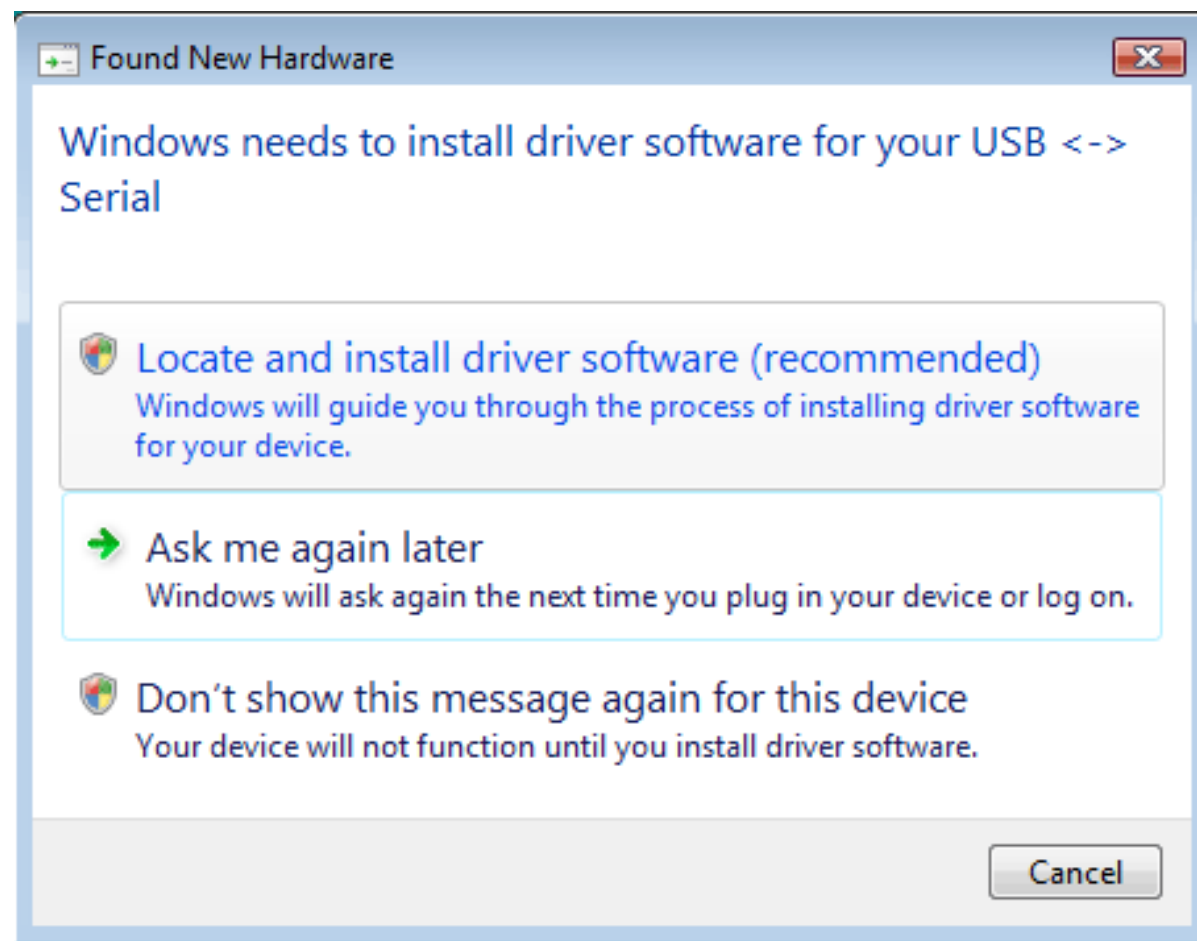
The Full Licensed Version will not cut any DEMO watermark cuts. You will need to purchase a license at <http://www.craftededge.com/purchase>. Please see the [Activate License Version](#) section for information on activating the Full Licensed Version.

Download and Install driver for Windows

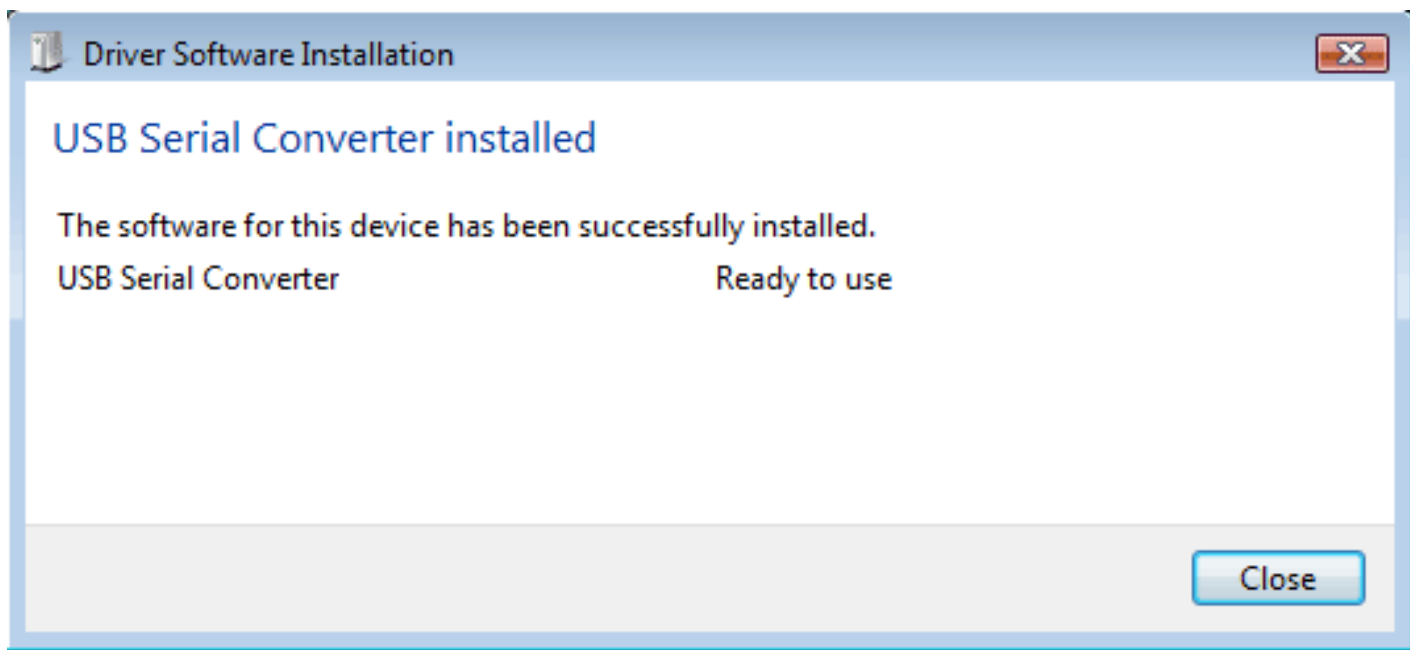
In order for "Sure Cuts A Lot" to work on a Windows machine, you will need to have the correct driver installed.

How to install the driver for Windows?

1. Connect your Cricut™ machine to your computer and turn the Cricut™ machine on
2. If you do not have the driver installed, Windows will indicate that it has "Found New Hardware", and should prompt you to install a driver. If you do not get this, the driver may already be installed on your computer, and you should see the entries in your "Device Manager" as in the screenshot at the bottom of this page.

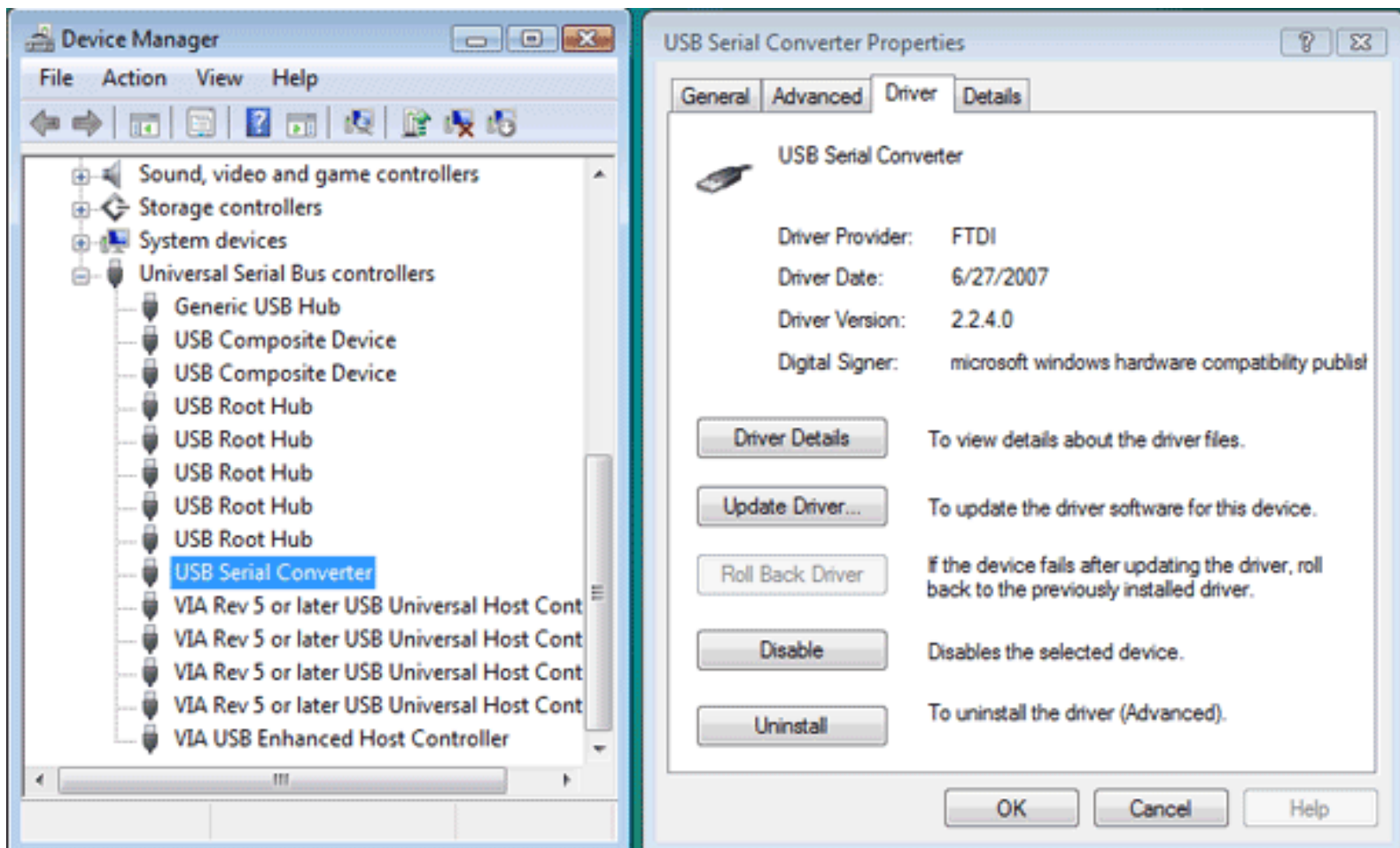


3. Choose the option to "Locate and install driver software".
4. Choose the option to allow Windows to search for the driver online
5. Windows should be able to find, download and install the correct driver



6. If the driver was not found, you can [download them here](#)

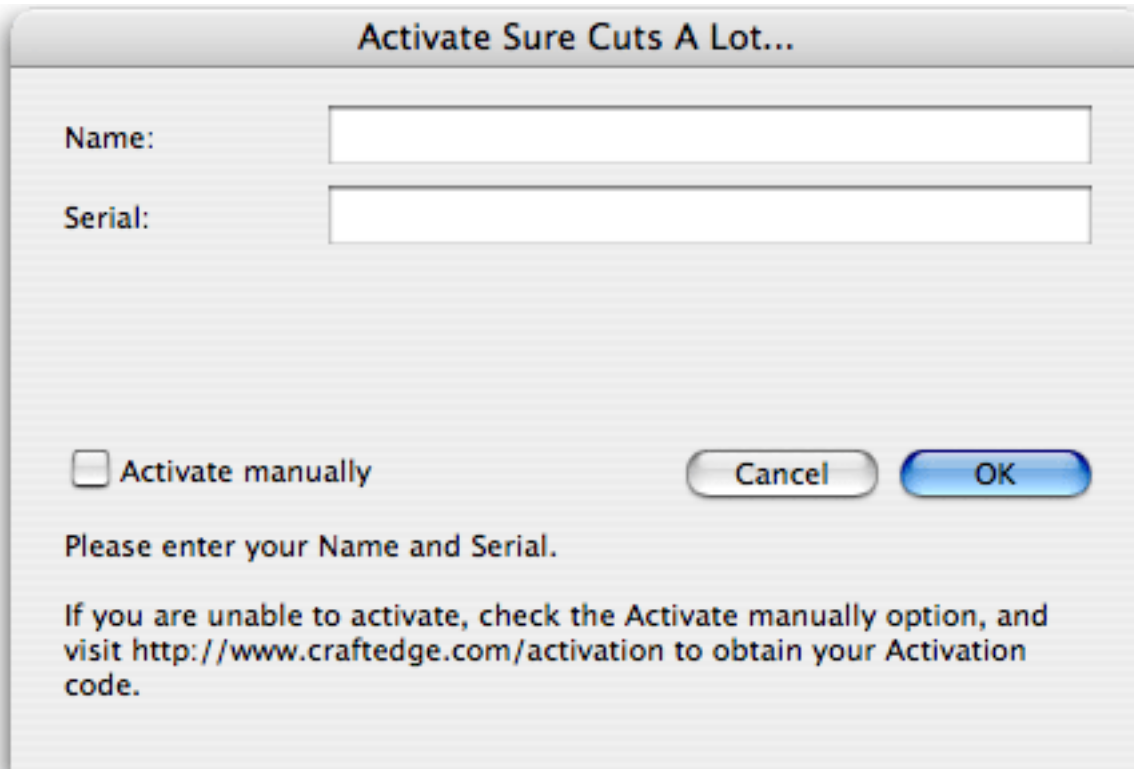
Once the driver has been installed (or if you already have the driver installed), you should see any entry for "USB Serial Converter" in your "Device Manager" under the "Universal Serial Bus controllers"



Activate Licensed Version

To activate the Full Licensed Version, you must first purchase a license at <http://www.craftededge.com/purchase>.

The computer you activate the software on does not require an Internet connection. However the activation process will be easier from a computer that has an Internet connection.



Activate Sure Cuts A Lot...

Name:

Serial:

Activate manually

Cancel OK

Please enter your Name and Serial.

If you are unable to activate, check the Activate manually option, and visit <http://www.craftededge.com/activation> to obtain your Activation code.

To activate the licensed version, please do the following (Method requires an Internet connection)

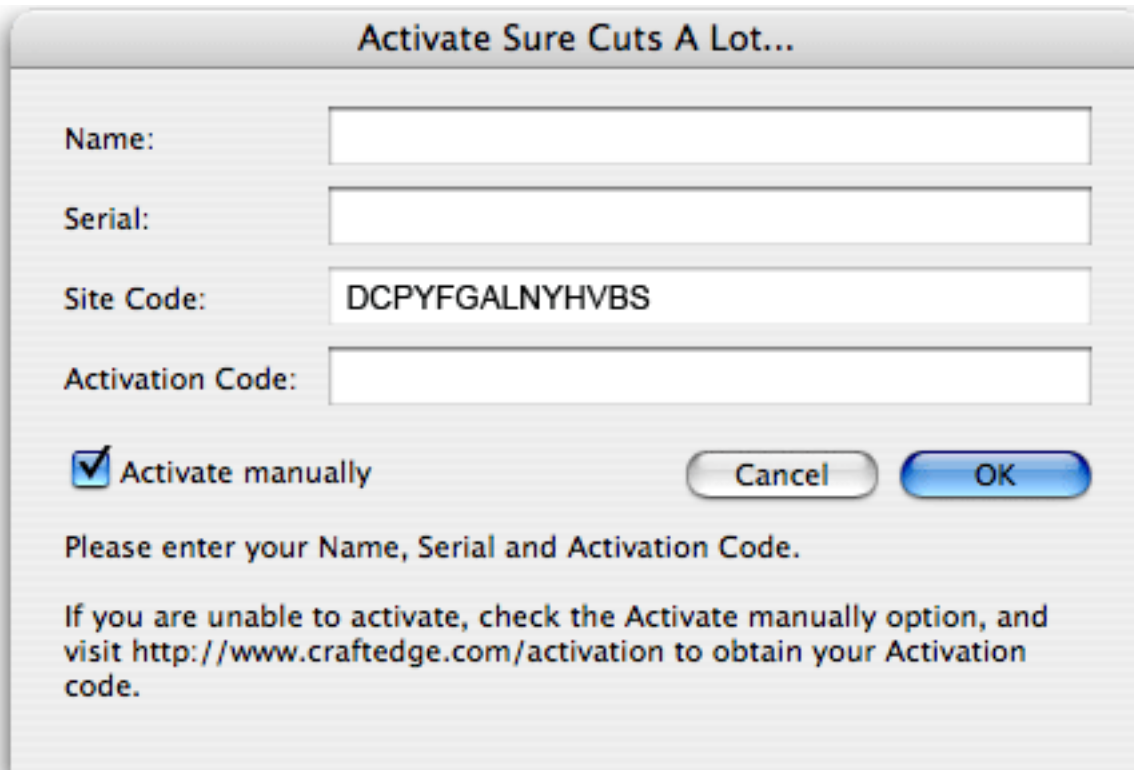
- Download, install and launch "Sure Cuts A Lot" (You can download the latest version at <http://www.craftededge.com/download>)
- Click the "Activate" button or choose "Activate" from the "Help" menu.
- Enter your name and serial number in the appropriate fields.
- Click OK and the software will attempt to connect to our servers to activate your software on your computer.

If you get an error saying the information is invalid, please note the following:

- Everything is case sensitive.
- The name must match exactly how it appears in your confirmation email (if you purchased from our website)
- We recommend you copy and paste your serial number to avoid any confusion between certain

letters and numbers.

- Make sure you don't have any firewall/security software blocking "Sure Cuts A Lot" from connecting to the Internet.
- If you do not have an Internet connection, you will need to generate your Activation Code on a computer that has Internet access, by following the directions below.



Activate Sure Cuts A Lot...

Name:

Serial:

Site Code:

Activation Code:

Activate manually

Please enter your Name, Serial and Activation Code.

If you are unable to activate, check the Activate manually option, and visit <http://www.craftededge.com/activation> to obtain your Activation code.

The following are steps to manually generate your Activation Code.

- Download, install and launch "Sure Cuts A Lot" (You can download the latest version at <http://www.craftededge.com/download>)
- Click the "Activate" button or choose "Activate" from the "Help" menu.
- Enter your name and serial number in the appropriate fields.
- Check the "Activate manually" checkbox. Once checked, you should see the Site Code and Activation Code fields appear.
- The Site Code field will already be pre-filled in, and cannot be changed.
- Visit <http://www.craftededge.com/activation/surecutsalot>.
- Enter your name, serial and site code.
- Click the "Generate Activation Code" button, and the Activation Code field should show your activation code.
- Copy and paste the activation code back into the program's activation dialog box and hit ok.

If you get an error saying the information is invalid, please note the following:

- Everything is case sensitive.
- The name must match exactly how it appears in your confirmation email (if you purchased from our website)
- We recommend you copy and paste values to avoid any confusion between certain letters and numbers.

Connecting Cricut Machine to your Computer

You will need to connect your Cricut™ machine to your computer via the USB port on the Cricut™ machine and your computer.

Locate the USB port on the back of your Cricut™ machine (next to the A/C adapter port) and plug in the corresponding shaped end of your USB cable. Then connect the other end of the USB cable to an open USB port on your computer.

The Cricut™ machine can be connected with any standard USB cable, as long as it is an A/B type cable. An A/B type cable has one flat end and one square end. The A/A type, with 2 flat ends, will not work.

It is recommended you connect your Cricut machine directly to your computer and not through a USB hub or another device such as your monitor or keyboard.



Cricut Firmware

To be able to use "Sure Cuts A Lot" with your Cricut Machine, your Cricut machine must have the following firmware version:

- Cricut Personal - v1.1
- Cricut Expression - v2.1

To find the firmware version currently on your Cricut Machine, turn your Cricut machine on and it should immediately indicate in the display on your Cricut machine, which version you currently have.

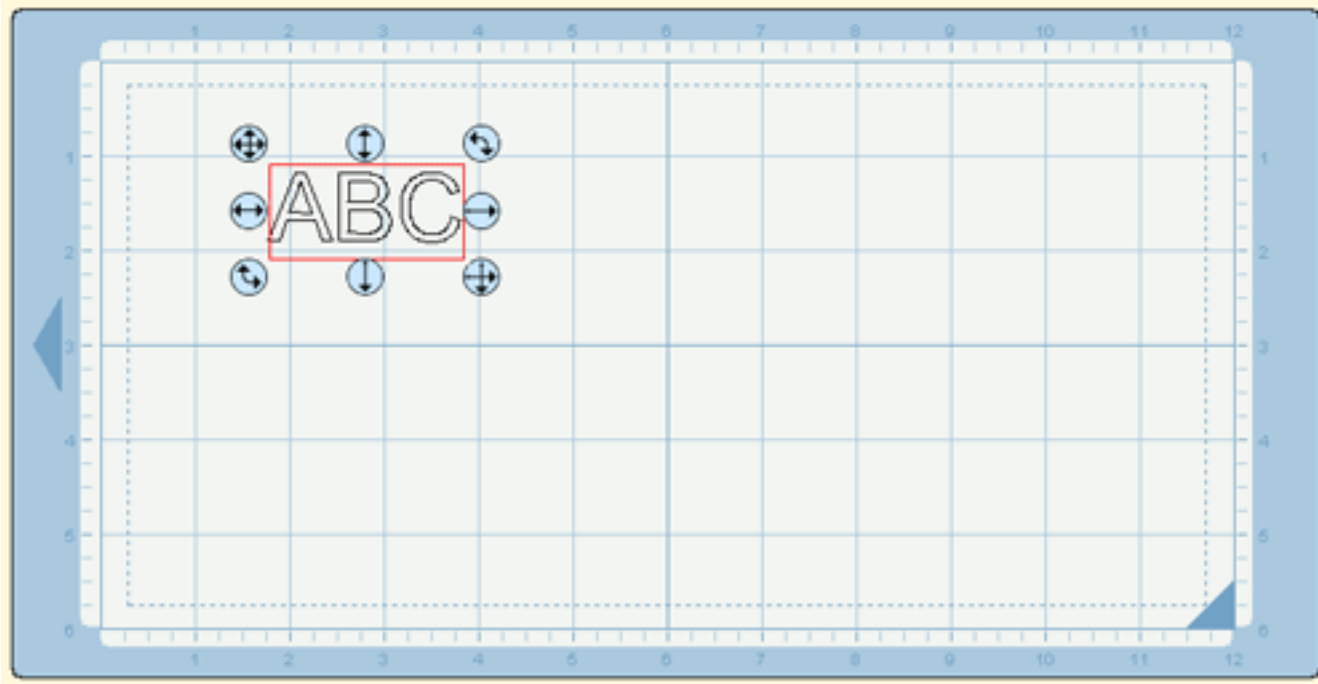
If you do not have the required firmware version, you will need to update the firmware on your Cricut Machine. Currently the only way to do this is through [ProvoCraft's Cricut Design Studio software](#). There is a Trial version available for Windows (XP SP2/Vista) (If you have a Macintosh and need to update your firmware, you must do it from a Windows machine), which you can install for free and update the firmware on your Cricut machine.

The following are steps to update your firmware using the Cricut Design Studio software.

1. Connect your Cricut machine to your computer. Make sure it is connected directly and not through a USB hub.
2. It is recommended you disable any anti-virus software before doing the firmware update.
3. Start the Cricut Design Studio software
4. Make sure your Cricut machine is turned OFF.
5. Put your Cricut machine into Firmware update mode, by press and hold down the Stop button, and then press the Power button. You must keep the Stop button pressed down until the Cricut machine beeps at you (usually in about 5 seconds). At this point, your Cricut machine is now ready to receive the update.
6. Choose "Update Firmware" from the Help menu. The update can take anywhere from 5 to 10 minutes. If the process finished significantly faster than 5 minutes, the update most likely failed, and you will need to start the process again from the beginning.





Cutting Mat


"Sure Cuts A Lot" allows you to create your designs using an on-screen virtual cutting mat as your workspace. The on-screen cutting mat can be set to be 6"x12", 12"x12", or 12"x24". (Note that 12"x12" and 12"x24" will only work with Cricut Expression™ machines). You can change the size of your mat by choosing the "Mat Size" from the "Cutter" menu.




The on-screen mat will prove to be very powerful and useful, as you can visually see all of the shapes laid out on the mat, before cutting anything. Once you have everything laid out the way you want, simply choose "Cut Design" from the "Cutter" menu or click the Scissor toolbar button, and the Cricut™ machine will start cutting your entire design.

The on-screen virtual cutting mat allows you to adjust the properties of each shape laid out on the mat. Simply select a shape on the mat with your mouse cursor and it will be highlighted with 8 blue circular selection handles. These handles will allow you to set the position, size and angle of the shape, just by click and dragging one of the handles.

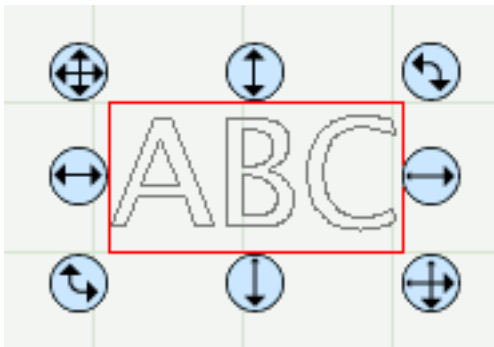
-  **Free Move** - The handle on the top-left corner of the selection box is used to move your selection anywhere on the mat.
-  **Vertical Move** - The handle in the top-middle of the selection box is used to move your selection up or down on the mat.
-  **Horizontal Move** - The handle in the middle-left of the selection box is used to move your selection left or right on the mat.
-  **Stretch** - The handle in the bottom-left corner of the selection box is used to scale/resize the shape. While scaling with this handle, the shape will retain its proportions.

 **Stretch Vertical** - The handle in the bottom-middle of the selection box is used to scale/resize the height of the shape.

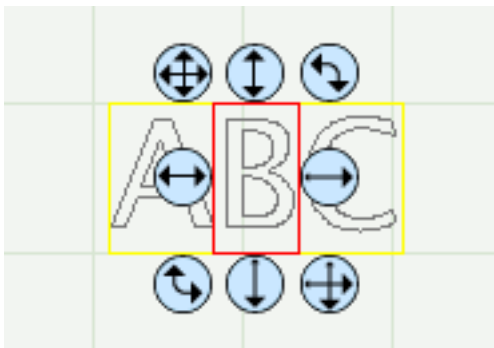
 **Stretch Horizontal** - The handle in the middle-right of the selection box is used to scale/resize the width of the shape.

 **Rotate** - The handle on either the top-right corner or the bottom-left corner of the selection box is used to rotate the shape to the desired angle. If the Rotate type in the Properties window is set to "Skew", the top-right and bottom-left corner handles will allow you to rotate along a separate axis.

When you click your mouse to choose the shape to change on the mat, it will select a group of shapes. For instance if you typed in ABC, and you clicked on any of these letters, it would select the group ABC.



If you want to alter a single shape in that group, you would click again on the particular shape you wish to change, and it should highlight that single shape. For instance, you click on A, B, or C and it highlights the group ABC. Then click on B on the mat, and it should now highlight just the B shape, which you can now use the handles to change its properties.



Cut With Cricut™

To begin cutting your design, either choose "Cut Design" from the "Cutter" menu, or click the Scissor tool button above the mat.



Before cutting, make sure you do the following first:

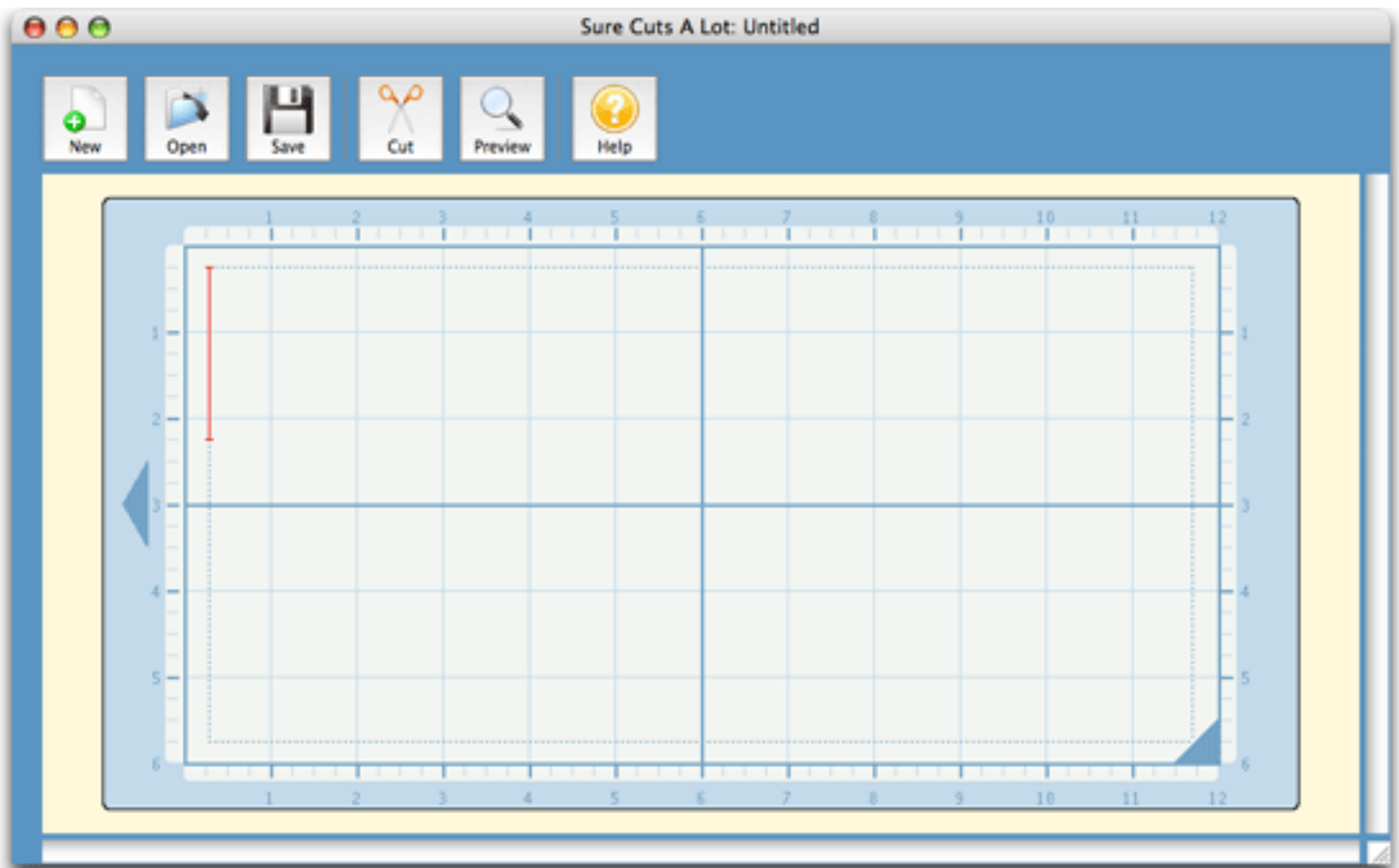
1. Your Cricut™ machine is [connected to your computer](#)
2. Your Cricut™ machine is turned on
3. Your Cricut™ machine has the [correct firmware version](#)
4. Paper is currently loaded in your Cricut™ machine

Getting Started

Below is a brief description and steps to get started with "Sure Cuts A Lot".

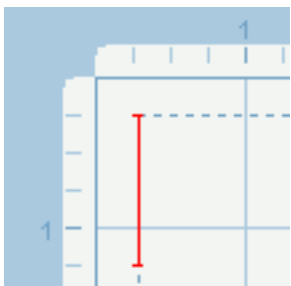
Starting "Sure Cuts A Lot"

After launching "Sure Cuts A Lot", you will be presented with the an on-screen virtual cutting mat. This is where you will add shapes to be cut with your Cricut™ machine. For more information on using the on-screen mat, please see the ["On Screen Virtual Mat" Section](#).



Adding Shapes to the Mat

To add shapes to the mat, select a font from the [Fonts window](#). Then click on the mat with your mouse cursor and start typing the letters you wish to add. The typed letters will be added to the mat wherever the red cursor beam is currently located.



You can move the cursor beam by using the Arrow Keys or by clicking on the mat with your mouse

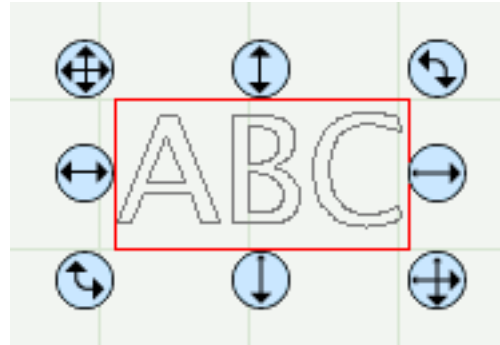
cursor.

Note: *If you are typing, but nothing shows up on the mat, the on screen mat may not have current focus, so click somewhere on the main window/mat to give it focus and start typing again.*

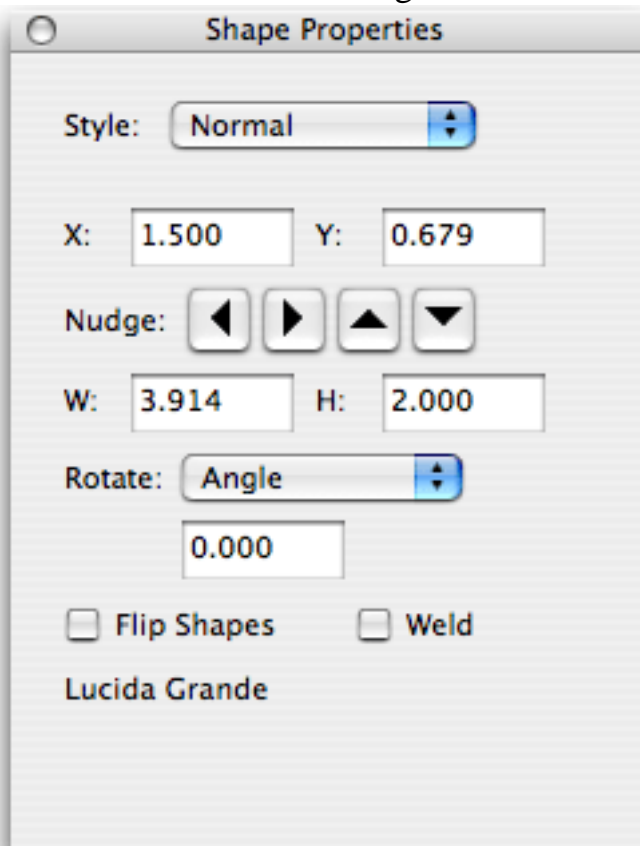
Changing The Properties of the Placed Shapes/Letters

Once the shapes/letters are added to the mat, you can modify the placement, size and rotation in 2 ways.

1. You can click on the shapes on the mat to select them, which will then be hilited and will show 8 blue circular handles which can be dragged to move, resize and change the angle of the selected shape.



2. Once the shape is selected, the [Properties window](#) will be filled in with the position, size and angle. You can type in new values and hit the Enter/Tab key to apply the new values, and the on screen mat should reflect the new changes.



Preview Your Design

Before cutting your design, you can choose to do a preview to see what outlines will get cut. To do a

Preview, choose **"Preview"** from the **"Cutter"** menu or the Magnifying Glass toolbar button. The on screen mat will be redrawn with red outlines where the actual cuts will be made. This is useful when "welding" shapes together to see what will get cut. For more information on welding, please see the ["Welding" section](#).

Cutting Your Design With Cricut

When you are ready to cut your design, choose **"Cut Design "** from the **"Cutter"** menu or the Scissor toolbar button. This will send your design to the Cricut machine for cutting. For more information on cutting, please see the ["Cutting With Cricut" section](#).

Saving your Design Layout

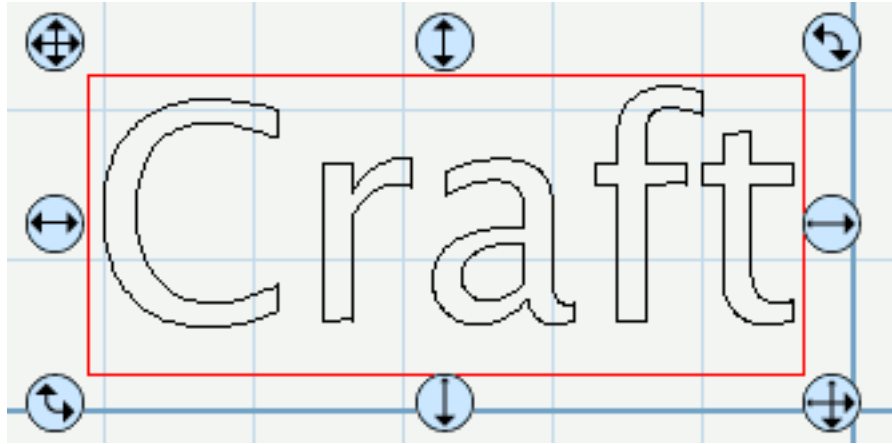
You can save your project at any time by choosing **"Save"** or **"Save As..."** from the **"File"** menu, or by clicking the **"Save"** toolbar button. This will allow you to save the settings for your design, so you can open it again at a later time for further modifications or for cutting with your Cricut machine. The saved project files, will have the file extension (.scut).

Welding

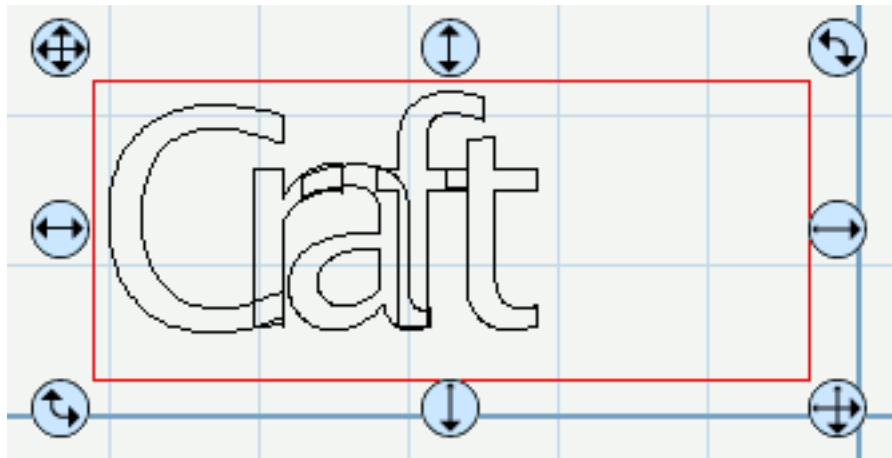
Welding allows you to make overlapping shapes to become a single shape, by joining shapes together wherever an overlap occurs. To enable welding, you need to check the **"Weld"** option in the [Properties window](#) for the shapes you wish to weld.

Below is an example of how to Weld.

1. First we will add the word "Craft" to the mat



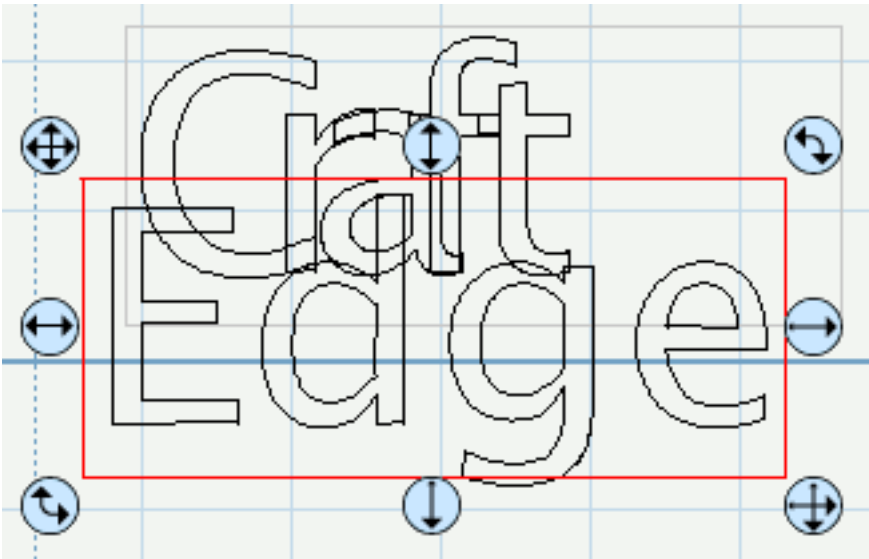
2. Originally nothing overlaps, so we will move the letters so that they overlap each other. Select the entire word and enable the **"Weld"** option in the [Properties window](#).



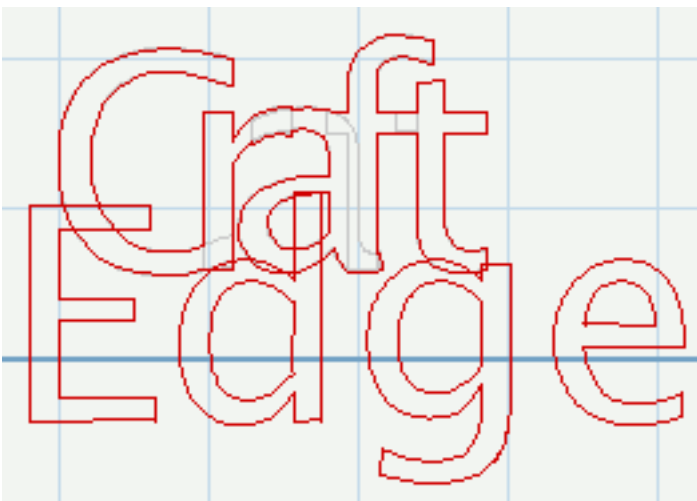
3. Now if we do a "Preview" by choosing "Preview" from the "Cutter" menu or choosing the Magnifying Glass toolbar button, you should see which outlines will be cut as indicated by the red outlines. You should notice the overlapping areas are removed and will not be cut now.



4. Now we will weld the word "Edge" to our welded "Craft" word. So we type the word "Edge" and move it so it overlaps the welded Craft word.



5. If we now do a Preview, you should see the overlapping between the 2 words are not removed. This is because we need to enable the "Weld" option for the new "Edge" word.



6. If we select the "Edge" word on the mat and check the "Weld" option in the Properties window and now do a Preview, you should see the overlapping areas are now removed.

Craft
Edge e

Import SVG Files

"Sure Cuts A Lot" allows you to import SVG files, giving you the power to cut your own custom artwork. SVG stands for "Scalable Vector Graphics" and is a file format for describing vector graphics. There are numerous sites where you can download .svg files. You can also create your own .svg files by using compatible software such as [Adobe Illustrator](#) or a free program called [Inkscape](#).

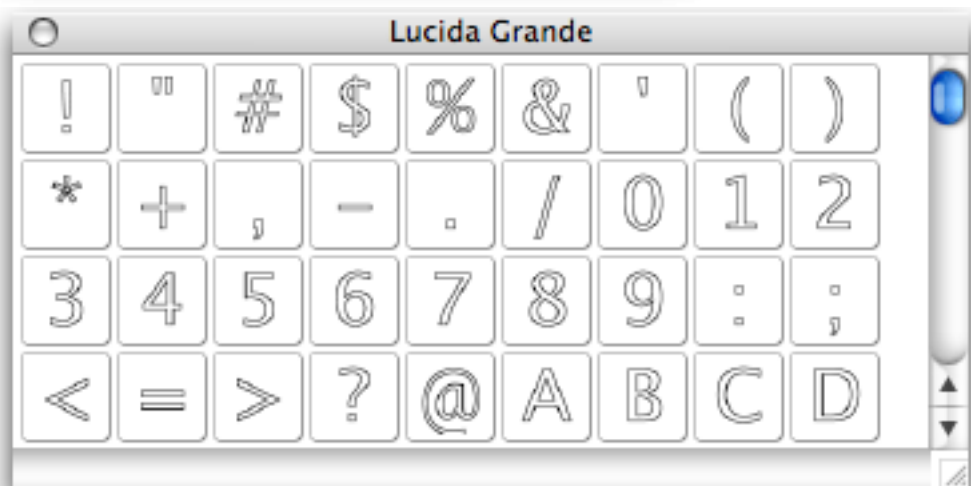
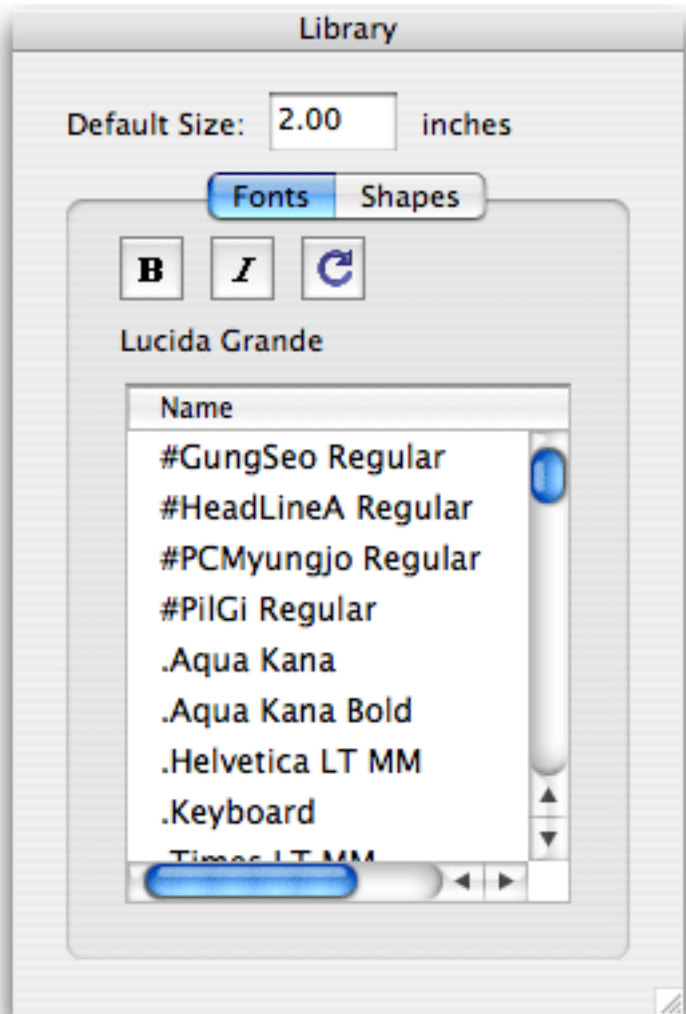
To import .svg files, choose "**Import SVG..**" from the "**File**" menu. This will bring up a dialog to choose the svg files you wish to import.

Please note that "Sure Cuts A Lot" will only import the vector artwork found in .svg files. It cannot import any text or Raster/Bitmap images embedded in a svg.


If you want to cut out a Raster/Bitmap image (ie, jpeg, gif, bmp, png, etc..), you will need to convert it to vector artwork by tracing the image, and saving it as a .svg using compatible software (Adobe Illustrator, Inkscape, etc.).

Fonts

The **Fonts** window allows you to choose a font on your computer. Once you choose a font, any characters added to the on-screen virtual mat will be from the chosen font. You can also click the "Bold" and "Italic" buttons to bold and/or italicize the font.



 **B Bold** - Click to make the selected font bold.

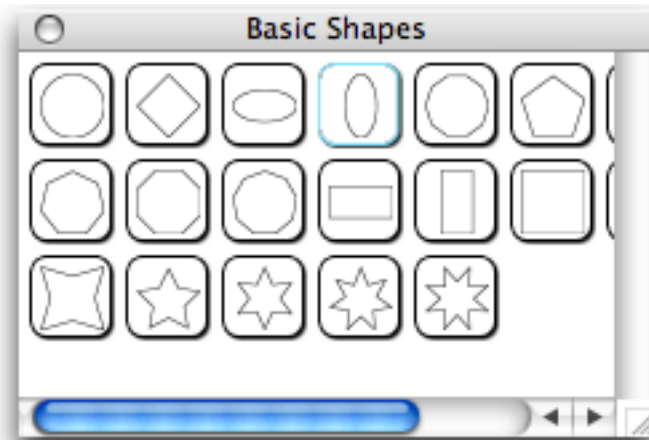
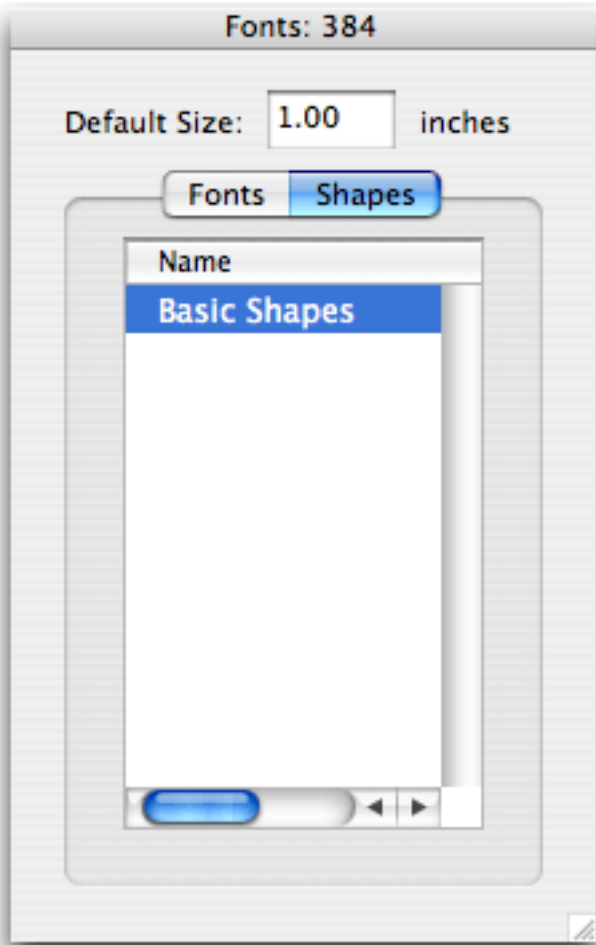
 ***I* Italic** - Click to make the selected font italic

 **Refresh** - Click to re-read the fonts on your computer

Note: *The Bold and Italic options may or may not alter the appearance of the font depending on how the font was created and how the Operating System interprets it.*

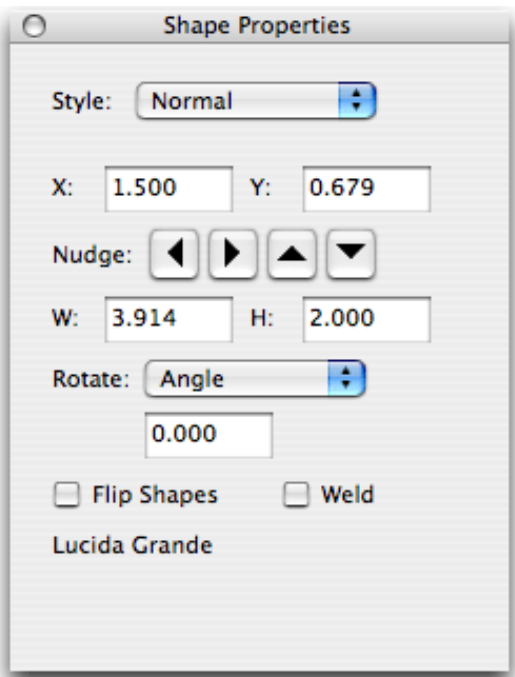
"Sure Cuts A Lot" Library

The **Library** window allows you to choose additional shapes to cut. Once you choose a Library from the list, the "Shapes" window will show the available shapes for the chosen Library. Click on the shape in the "Shapes" window to add it to the on screen virtual mat.



Shape Properties

The **Shape Properties** window allows you modify the shape's properties, such as position and size. Type in the new values and hit Enter or the Tab key, and the new properties for the current shape will be updated on the display mat. You can also modify the shapes directly on the mat, by selecting the shape and dragging the selection handles.



X: The horizontal position of the shape on the mat.

Y: The vertical position of the shape on the mat.

Nudge: Slightly shift the shape Left, Right, Up or Down.

W: The width of the shape in inches.

H: The height of the shape in inches.

Rotate: Choose "Angle" and enter an angle to rotate the shape in degrees (0 - 360). Choose "Skew" to rotate the shape along 2 separate axis.

Flip Shapes: Flip the shapes

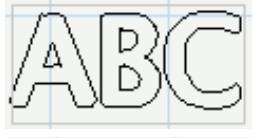
Weld: Check to enable welding to combine overlapping edges. For more information, please see the [Welding section](#).

Styles:

Normal: Original look



Shadow: Expands the outlines



Blackout: Removes interior outlines



Shadow Blackout: Combination of both the Shadow and Blackout styles



Frequently Asked Questions

Will this software work with my Cricut™ machine?

This software is compatible with both the original and current models of the original Cricut™ and Cricut Expression™ machines. You may however need to update the firmware on your Cricut machine for the software to function properly.

What firmware version do I have and need?

When you turn on your Cricut™ machine, the display will show which firmware version is currently loaded on your Cricut™ machine. "Sure Cuts A Lot" requires version 1.1 for the original Cricut™ machines and version 2.1 for Cricut Expression™ machines.

How do I update my firmware?

Right now, the only way to do this is from a Windows machine, by using ProvoCraft's Cricut Design Studio™ software. They have a free trial version available for download which you can download and use to update the firmware on your Cricut machine.

What operating systems can I run "Sure Cuts A Lot" on?

We have versions available for Windows (2000/XP/Vista) and Macintosh OSX (10.4/10.5)

Can I cut the shapes from my Cricut™ cartridges?

No. "Sure Cuts A Lot" cannot cut any shapes from your Cricut cartridges.

Do I need a special USB cable to connect my computer to my Cricut™ machine?

No. Any standard USB cable will work, as long as it is an A/B type cable. An A/B type cable has one flat end and one square end (A/B type of cable is usually the same as those used to connect a printer or external drive via USB). The A/A type, with two flat ends, will not work.

Is Cricut Design Studio™ required for "Sure Cuts A Lot" to work?

If your Cricut machine does not have the correct firmware version, you will need to use Cricut Design Studio to update the firmware on your Cricut machine before "Sure Cuts A Lot" can cut properly. There is a free trial version available which can be used to update the firmware. Otherwise, "Sure Cuts A Lot" does not depend on Cricut Design Studio to work.

Can I install the software on a second computer?

The license for our software is a single user license, and entitles that single user to install the software on a second computer of the same platform for which the license was purchased for, provided they are not both used at the same time, or by more than one person..

Can I use my serial to install on both a Windows and Macintosh computer?

No. The license keys are specific to the platform for which it was purchased for. You will need to purchase a separate license for each platform you wish to use the software on..

* Cricut, Cricut Expression, and Cricut Design Studio are trademarks of Provo Craft and Novelty Inc. Craft Edge and "Sure Cuts A Lot" are not affiliated with Provo Craft and Novelty Inc.

Contact Us

E-mail:

support@craftedge.com

Web:

<http://www.craftedge.com/support>

Forums:

<http://forums.surecutsalot.com>